



www.docshipper.com



DOCSHIPPER GROUP INSPECTION REPORT

Time is money. We save you both!



Inspection Report

General Description



Product Name:	VCM-4300 Electric Vintage Car Total 9 Seats with belts(3+3+3)
Inspection location:	Old Town, Wucheng County, Dezhou City, Shandong Province
Inspection date:	May 9 2021
P/O number:	-
Inspection Type:	Pre-shipment Inspection
Ordered quantity:	4pcs
Inspected samples:	4pcs
Reference sample available:	No

Final inspection result

PENDING

(The client has the final right to make the decision.)

Inspector : Jason
Report reviewer : Jevon

Remarks

- 1 The factory had no weighing equipment, and the product cannot be weighed.
- 2 After QC arrived at the factory, four sightseeing cars had been completed, but they were not packed.
- 3 There is no logo, tag, bar code, etc. on the appearance of the product, and no product instructions or certification materials.
- 4 The products were stored in the workshop, not covered to prevent dust. The cars' body had floating ash, and the factory might clean before packaging.
- 5 The input voltage of the sightseeing car was 220V.

Inspection Report

Advice for today's inspection

The defects were found by the inspector on the inspected samples were shown to the factory. The inspector advised the factory to repair/replace these samples.

Category	Pass	Fail	Pending	Remark
Quantity	√			Remark 2
Product specification			√	Remark 4
On-site test	√			Remark 1,5
Data measurement			√	Refer to data details
Packing			√	Refer to packing details
Marks&Labels			√	Remark 3
Factory cooperation	√			

Product check:

Item No.:	Product size L x W x H(cm)	Product N.W (kg)	UPC Barcode	Barcode scanning
VCM-4300 Electric Vintage Car	493*150*200cm	/	-	-

Export carton information:

Carton:	New export carton	/	Sealing:	Opaque gummed tape	-
Fastening:	Metal staples	/		Transparent gummed tape	-
Strapping:	Nylonx2	/		Paper tape	-
Material:	Ply of corrugated paper	/	Others:	/	/

Quantity

Item Number	Ordered Quantity	Finished Quantity	Carton quantity		Inspected quantity	
			Packed	Unpacked	Packed	Unpacked
VCM-4300 Electric Vintage Car	4pcs	4pcs	0	4pcs	0	4pcs

Inspection Report

Inspection Standard				
Inspection method	ANSI/ASQZ1.4 (MIL-STD-105E)			
Sampling plan	Single, Normal	Sample size	4pcs	
AQL II		Critical	Major	Minor
	Defects found	0	0	0
	Max limit	0	/	/
Final AQL result		Pending <i>Refer to remark 3,4</i>		

Defective List				
Item	Swaddle Blankets	CRI	MAJ	MIN
1	VCM-4300 Electric Vintage Car Total 9 Seats with belts(3+3+3)	0	0	0
	Total Defects Quantity	0	0	0

Factory Picture	
	
Product storage	Product storage

Product Specification
VCM-4300 Electric Vintage Car

Inspection Report



Product view



Product view



Product view



Product view



Inspection Report

Product view



Product view



Product view



Product view



Product view

Product view

Inspection Report



Product view



Product view



Product view



Product view



Inspection Report



Instructions view



Instructions view



Product view



Product view

Inspection Report



Product view



Product view



Product view



Product view



Inspection Report

Product view



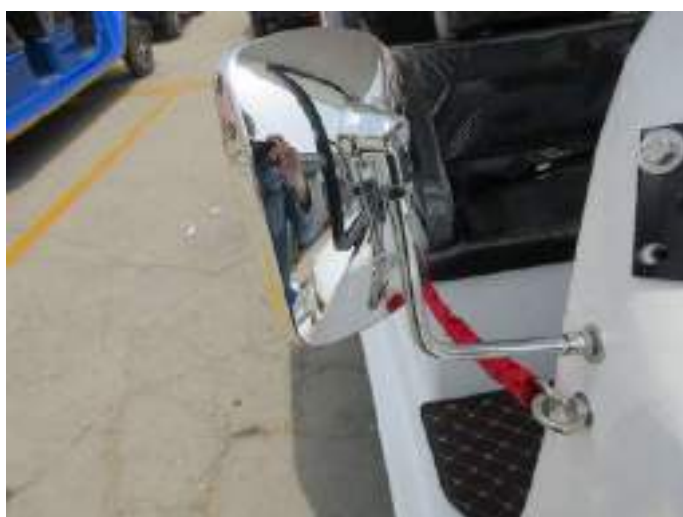
Product view



Product view



Product view



Product view

Product view

Inspection Report



Product view



Product view



Product view



Product view



Inspection Report

Product view



Product view



Product view



Product view



Product view

Product view

Inspection Report



Product view



Product view



Product view



Product view



Inspection Report

Product view



Product view



Product view



Product view



Product view

Product view

Inspection Report



Product view



Product view



Product view



Product view



Inspection Report

Product view



Product view



Product view



Product view



Product view

Product view

Inspection Report



Product view



Product view



Product view



Product view



Inspection Report

Product view



Product view



Product view



Product view



Product view

Product view

Inspection Report



Product view



Product view



Product view



Product view



交流异步电机 (72V/7.5KW)	
额定电压: 72 V	额定电流: 118 A
额定功率: 7.5 KW	工作制: S2-60 min
额定转速: 3000r/min	峰值转速: 6000r/min
防护等级: IP54	额定频率: 102Hz
绝缘等级: H 级	重量: 35 kg

Inspection Report

Product view



Product view



Product view



Product view



Product view

Product view

Inspection Report



Product view



Product view



Product view



Product view



Inspection Report

Product view



Product view



Product view



Product view



Product view

Product view

Inspection Report



Product view



Product view



Product view



Product view



Inspection Report

Product view



Product view



Product view



Product view



Product view

Product view

Inspection Report



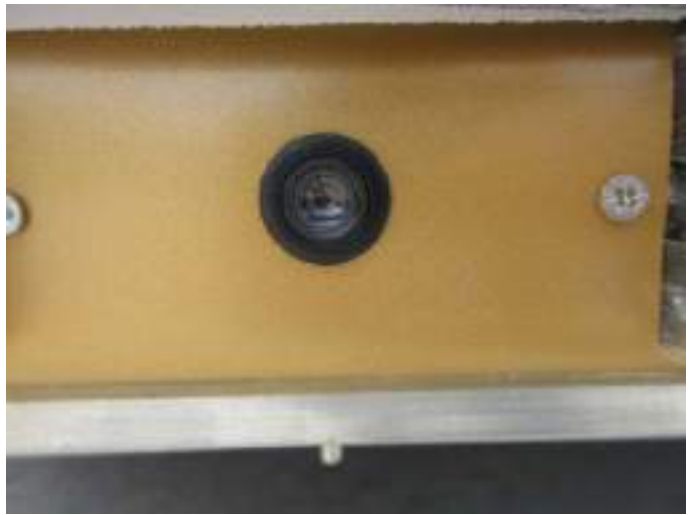
Product view



Product view



Product view



Product view



Inspection Report

Product view



Product view



Product view



Product view



Product view

Product view

Inspection Report



Product view



Product view





Product view



Product view



Inspection Report

<p>Product view</p>	<p>Product view</p>
 A photograph showing a white, four-wheeled utility cart with a brown quilted seat and a metal handrail. The cart is parked on a paved surface.	 A close-up photograph of a hand lifting the brown quilted seat cover to reveal a dark grey or black material underneath.
<p>Product view</p>	<p>Product view</p>

Size measurement for the product

 A photograph of the white utility cart parked on a paved lot. A yellow measuring tape is stretched across the front of the cart to measure its length.	 A close-up photograph of a yellow measuring tape held against a dark grey surface. The tape shows measurements in inches, with the number '9' clearly visible.
<p>Size of product</p>	<p>Size of product</p>

Inspection Report



Size of product



Size of product





Size of product




Size of product



Inspection Report

<p align="center">Size of product</p>	<p align="center">Size of product</p>
	
<p align="center">Size of product</p>	<p align="center">Size of product</p>

<p>Test</p>	
	
<p align="center">Fully loaded driving test</p>	<p align="center">Fully loaded driving test</p>

Inspection Report



Fully loaded driving test



Fully loaded driving test



Fully loaded driving test



Light test

Inspection Report



Light test



Light test



Light test



Light test

Inspection Report



Reverse image



Reverse image



Reverse image



Reverse image

Note: This report does not relieve suppliers from their contractual liabilities or prejudice buyers' right for compensation for any apparent and/or hidden defects that are not detected during our random inspection or occurring thereafter. And the report is only for what we find on-site which doesn't include any defects that may occur after the inspection.

--The End of Report--